

YES, IS A GARDEN BUT IS A MYSTERIOUS GARDEN !!

JINZHOU WORLD LANDSCAPE ART EXPOSITION PRELIMINARY DESIGN CONCEPT



The contemporary landscape explores the ways and resources of our technology. We know something about our future while still know so little about our past?

I wonder: why not looking for inspiration in constructions and landscapes of ancient civilizations?

There are pyramids around all the world. Why? If they are bright and wonderful works of human inventiveness, why not keep building?

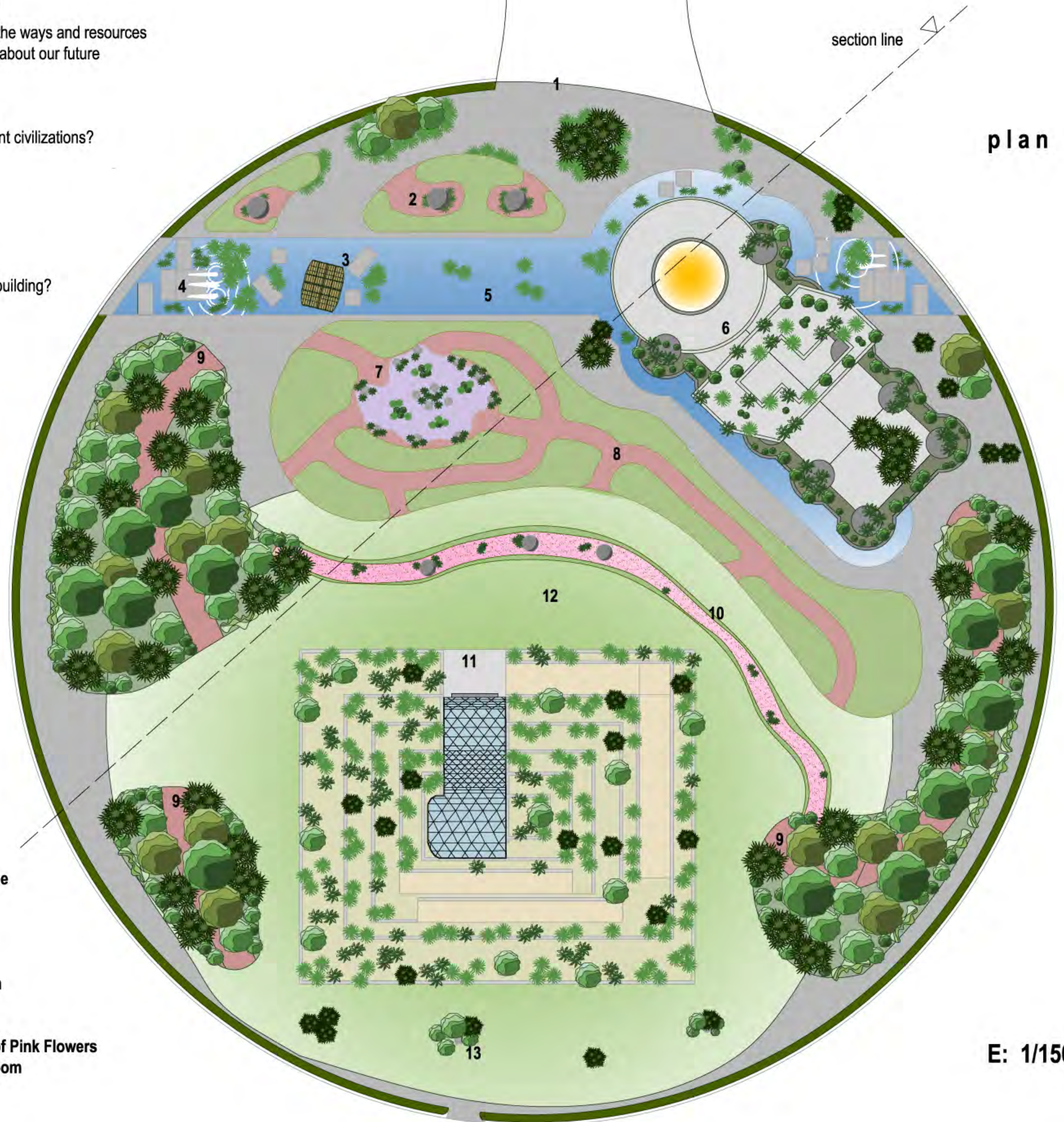


Enjoy the amazing riddles of our ancient world (a true garden of mysteries) and discover the secrets of ancient Chinese Yin Shang dynasty and others wonders of Archaeolandscape

Are you invited to explore the garden. Let's find hidden knowledge within us and ask us about ourselves with curiosity and playfulness of a child



- 1 Entrance
- 2 The Hidden Spheres of Stone
- 3 The Megalithic Fountains
- 4 The Raft of Reeds
- 5 The Great Sacred Pond
- 6 The Temple of the Sun
- 7 The Yin Shang Masks Garden
- 8 The Tall Grass Labyrinth
- 9 The Tree Deep Forests
- 10 The Trench with the Stream of Pink Flowers
- 11 The Pyramid with the Showroom
- 12 The Hill
- 13 The Statues Hidden

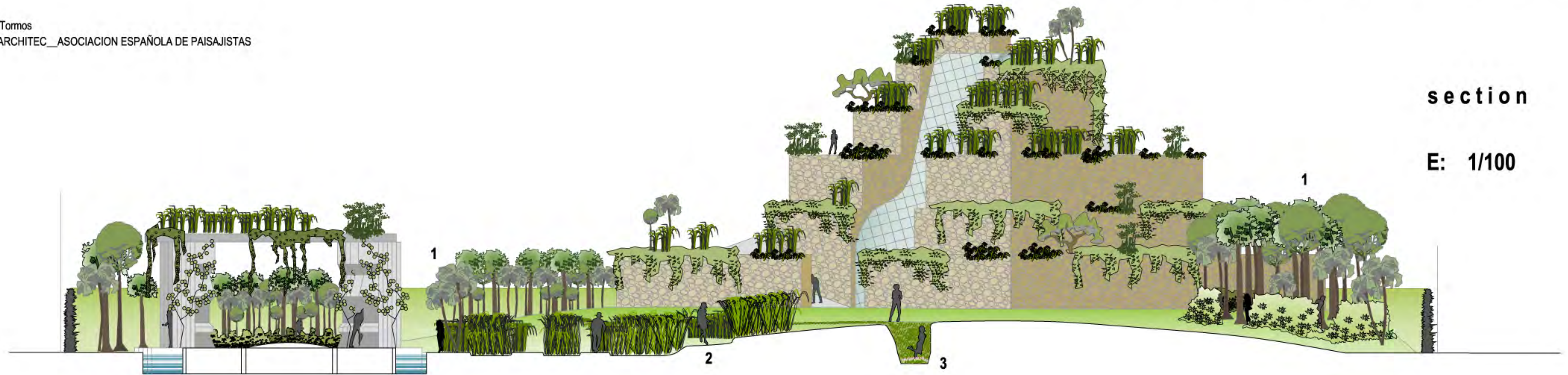


YES, IS A GARDEN BUT IS A MYSTERIOUS GARDEN !!

JINZHOU WORLD LANDSCAPE ART EXPOSITION

PRELIMINARY DESING CONCEPT

Angel Rubio y Tomos
LANDSCAPE ARCHITEC__ASOCIACION ESPAÑOLA DE PAISAJISTAS



section

E: 1/100



1
The woods surrounding the pyramid of three sides and are formed by planting densely packed, trees and palm trees suitable to the climate of Jinzhou



2
The labyrinth of tall grass (Miscanthus sinensis, basically) gets in the way to the pyramid, the hidden intervals as we are moving towards it



3
The moat in front of the pyramid access requires to surround and sign in from the sides. At its core lies a carpet of pink flowers in the form of stream



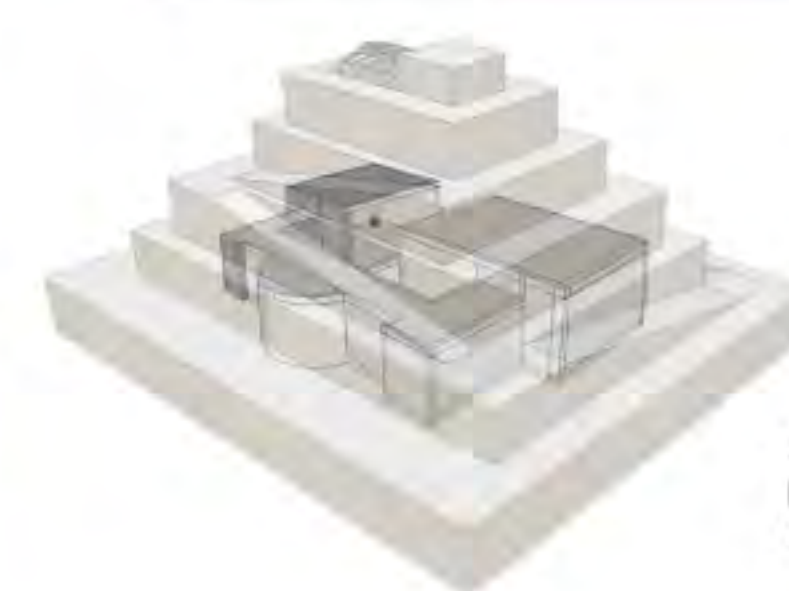
To cross the pond is necessary to use the raft of rushes, pulling an oar in a limited area megalithic stones **4**



Temple of the Sun and Pyramid are covered with vegetation, plants of the world collections and wild flowers **5**



At the core of the Pyramid was the Showroom with a glassed hall, that houses the background a backlight model of the Earth **6**



6

